



CORPORATE

PARTNERS

Be part of the journey



We can improve lives - but we need *your* help!

At The YOU Trust, our mission is to empower people to thrive in their communities. We believe that everyone, whether facing tragic circumstances or the everyday struggles of life, deserves to be supported and cared for. Each person carries a unique story, full of memories, dreams, and challenges. It's incredibly inspiring to witness individuals take that brave leap to reach out for help, reminding us that we're all in this together. When we connect with them, we rekindle their sense of hope and show them they're not alone.

We envision a world where every individual feels valued, supported, and has the opportunity to feel a part of their community. We're dedicated to creating an environment where people can access the resources they need to lead fulfilling lives, no matter their situations. Partnering with organisations who share our values is an integral part of our ability to support those who are vulnerable in our local communities.

You can help us improve lives by partnering with us.



Hayley Connor
CEO



Tonia Redvers
Director of Operations
& Business Development

Why partner with us?

Partnering with a charity offers your company an opportunity to make a meaningful impact while also benefiting your business. By partnering with us, you'll:

Enhance Your Corporate Social Responsibility (CSR): Supporting a charity demonstrates your commitment to social good, strengthening your brand's image and showing stakeholders that you care about making a difference.

Boost Employee Engagement: Partnerships with charities are proven to increase staff morale and loyalty. Involvement in charitable activities fosters a sense of pride and purpose among employees, enhancing team spirit and job satisfaction.

Increase Brand Visibility: Collaborating with The YOU Trust will provide your brand with greater exposure to a diverse audience. Through our events, social media, and community outreach, your company will be showcased as a valued supporter of a cause that resonates with people.

Attract New Customers: Today's consumers are more likely to support businesses that give back to the community. By aligning with our charity, your company can reach potential customers who prioritise ethical and socially responsible businesses.

Create a Lasting Impact: Your support will go directly towards supporting vulnerable people, ensuring real, measurable outcomes that positively change lives and uplift communities.

Partnering with The YOU Trust may include:

- Project development
- A person or whole organisation
- High profile recognition
- Sponsorship
- Cause-related marketing
- Fundraising activities
- Volunteering
- Campaigning
- Pro Bono



How we can support you

We are excited to collaborate with you in building a meaningful and rewarding partnership we can both take pride in. Our commitment to your organisation includes:

Innovative Fundraising and Volunteering Opportunities: Engage your team in creative and impactful ways that resonate with your company's values.

Marketing and Publicity Support: Amplify your achievements with our assistance in promoting your goals and success stories to a wider audience.

Dedicated Support: Our client-focused team will be there every step of the way to offer cheer, commitment, and guidance.

Bespoke Training: We can offer training for your HR team or managers to better understand inclusion and how to support employees with vulnerabilities.

How your donations can help:



£1,000
can contribute
towards play
equipment for
children at a refuge

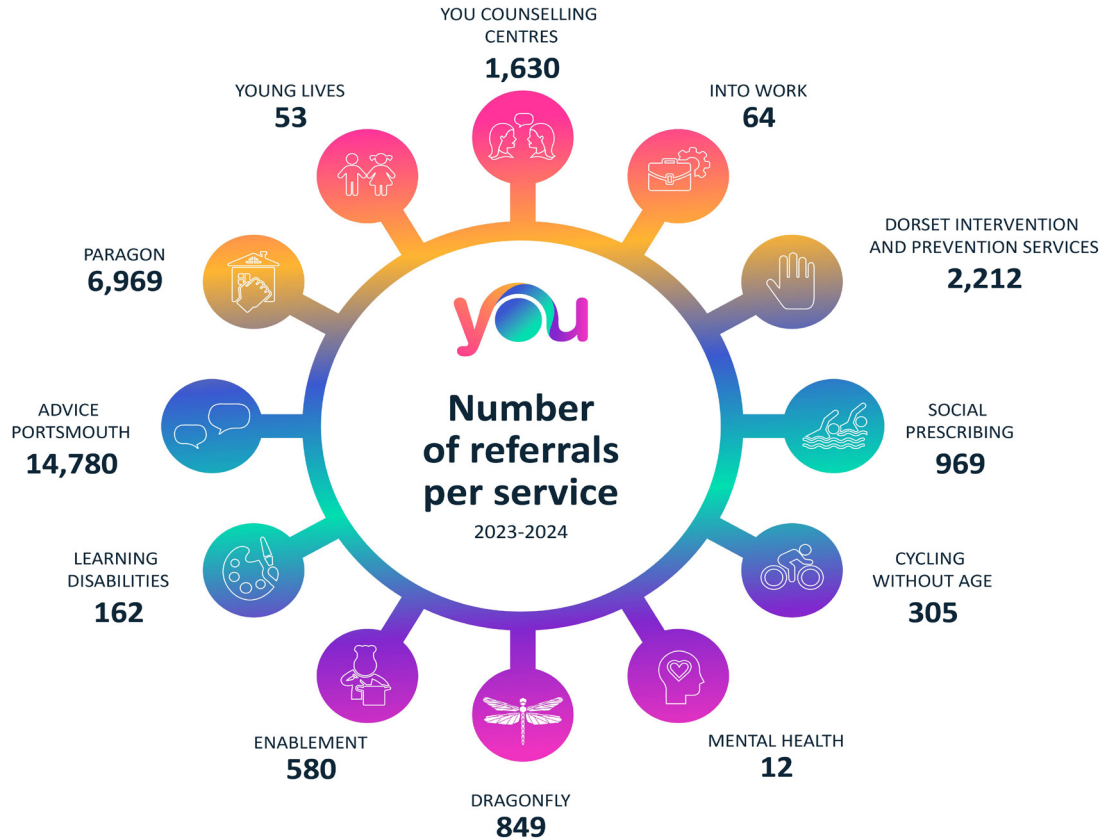


£5,000
can contribute
towards 100
counselling sessions
to help people out of
a dark place



£10,000+
can contribute
towards the purchase
of safe accommodation
to protect individuals

Introducing The YOU Trust





Care and Support

We help people live the lives they want by assisting them with everyday things. Like cooking, cleaning, finding work, learning to live independently, etc.

Community

This is our community wellbeing team, offering advice and support to help people in a variety of circumstances. This may be getting involved in their communities, back to work and where needed, link with other support services.

Counselling

We have four counselling teams, three who specialise in specific life experiences - sexual assault, domestic abuse, substance misuse. We also have a team in Portsmouth offering generic counselling.

Domestic Abuse

Paragon is our domestic abuse, sexual violence and stalking teams. We work with both adults and children victims of violence and abuse and have specialist programmes for people using abusive behaviours.

Young Lives

We help young people gain the skills needed to live independently by developing confidence, self-respect, and ambition.

Friends of you

As a charity, we are always grateful to those who go out of their way to help us. Here are just a few organisations who have kindly supported us in various ways:



CoreLogic



How companies are working with us



The League of Friends' generous donation has saved our Cycling Without Age service from the verge of shutting down, allowing us to continue for a full year. In addition, they have kindly extended partial funding to sustain the service for an additional two years, ensuring we can keep offering this valuable experience to our community.



At our previous premises, Lightning Safety Systems ensured our office met safety standards by installing a new fire panel, fire call points, and fire extinguishers. When we relocated, they generously provided further essential fire safety support at our new and other local offices, helping us maintain a safe and secure environment.



We are honored to have been chosen as the charity of the year by The Rock Project. They recently hosted a fantastic end-of-year concert in Portsmouth, which we had the pleasure of attending. During the event, they held a charity raffle with generous prize donations from other organisations which raised significant funds to support us.

The Portsmouth charity using trike rides to tackle loneliness

MERIDIAN | CYCLING | LONELINESS | WELLBEING |  Tuesday 2 July 2024 at 5:09pm



The Cycling Without Age project in Portsmouth and Hayling Island wants more trikes and volunteers
Credit: ITV Meridian

A charity that uses trike rides to tackle loneliness and social isolation says there's a growing need to help people because of increasing mental health issues and the cost of living crisis.

The Cycling Without Age project in Portsmouth and Hayling Island wants to recruit more trikes and volunteers to cater for people who find it hard to leave home.

Martin Shaw had a stroke four years ago and says it's nice to be taken on a trip around Canoe Lake in Southsea, "I can't walk so to get out and about in the fresh air and meet other people is so important to me because I wouldn't be able to get out much otherwise."

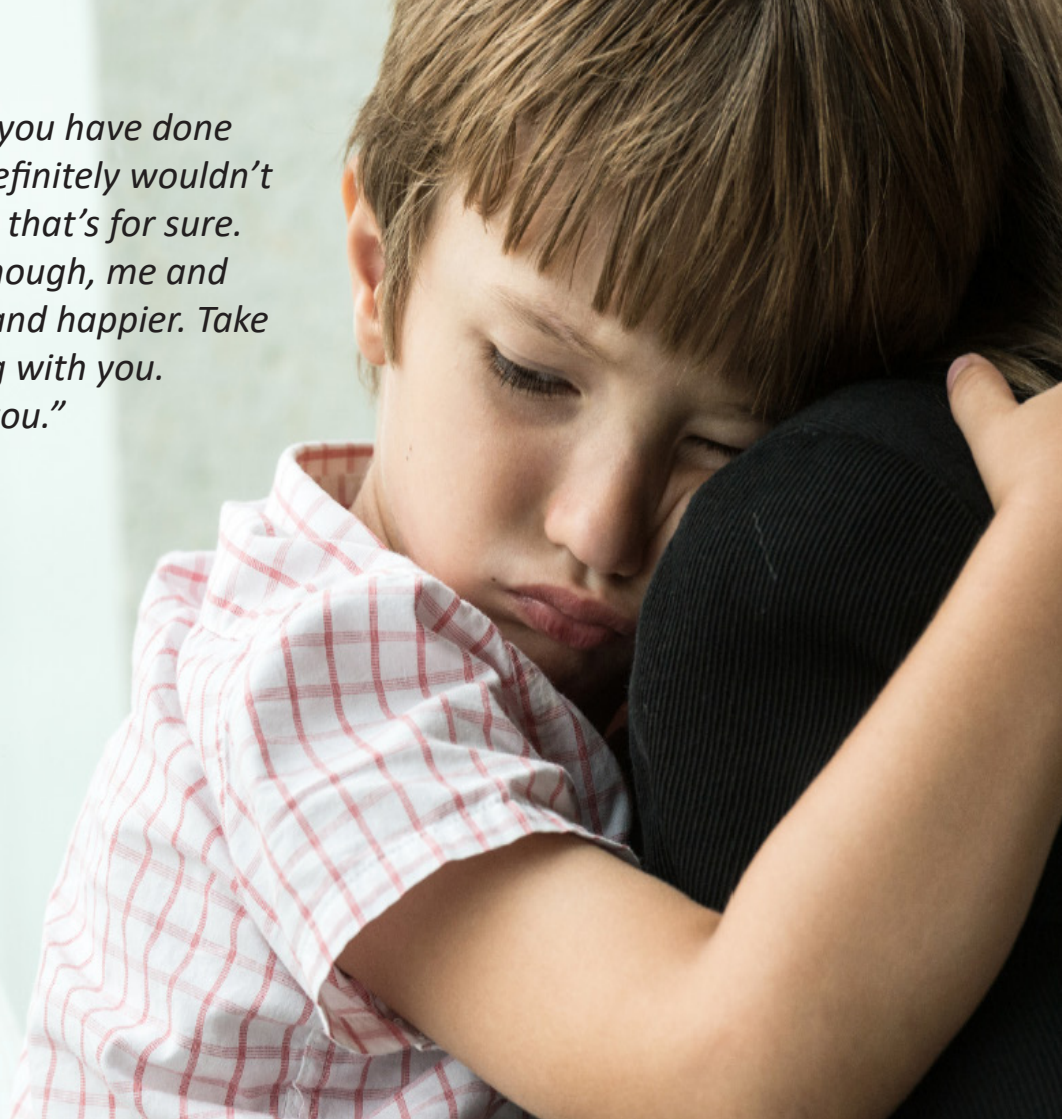


Recent media coverage

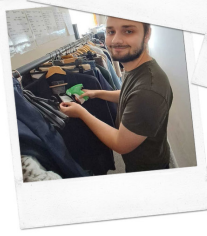


“Thank you so much for all you have done for me and the children. I definitely wouldn’t be where I am without you, that’s for sure. Honestly can’t thank you enough, me and the kids are so much safer and happier. Take care it’s been great working with you. The kids are going to miss you.”

- Client



you



How many people across the UK need support?

Countless people endure trauma and struggles every day, but the true scale of these challenges often goes unnoticed. These aren't just numbers. They're real lives. Real stories.

When we look at the statistics, we're not just looking at data. We're seeing the suffering and the urgency for change. Each figure represents a person who needs hope and support. We endeavour to create a future where no one feels alone in their struggles.

1 in 4
woman and 1 in 6 men suffer from domestic violence in their lifetime

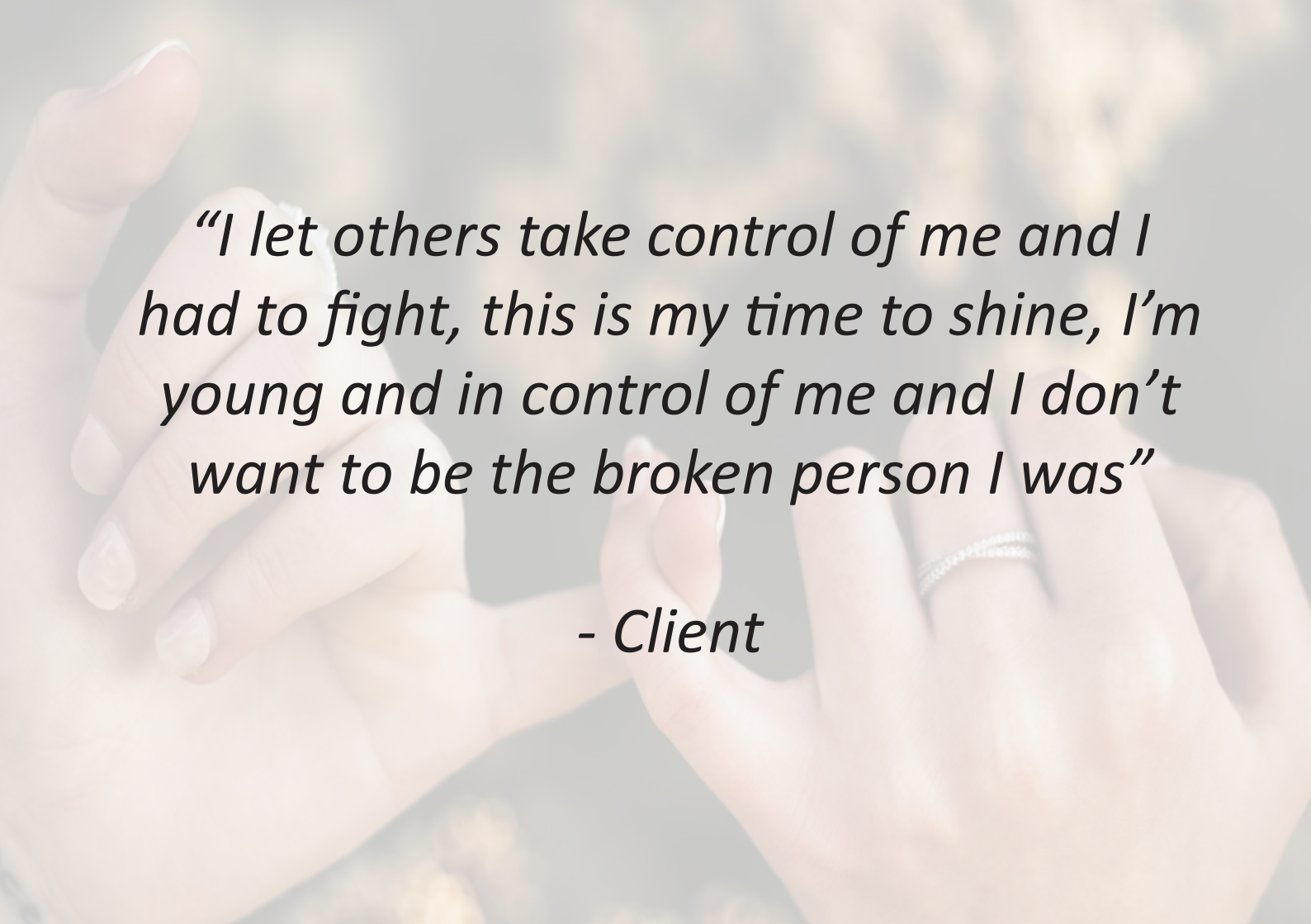
1.5m
in the UK have a learning disability

1 in 7
adults say their mental health is currently either bad, or the worst it's ever been

On average, two women are murdered each week and 30 men each year, due to domestic violence. Domestic violence accounts for 16% of all violent crimes and has the highest rate of repeat victims, with 35 assaults before police involvement. Domestic abuse is the leading cause of homelessness and 1 in 5 children are exposed to it. The law now recognises children who witness abuse as victims, too.

According to a study, 54% of people with a learning disability have a mental health issue. Someone with a profound and/or multiple learning disabilities might have difficulties seeing, hearing, speaking and moving. They may have complicated health and social care needs due to these or other conditions.

18.5% of women and 12.5% of men are currently struggling with poor mental health. 1 in 4 people will experience a mental health problem of some kind each year in England.

A close-up photograph of two hands clasped together in a supportive grip. The left hand is on the left, and the right hand is on the right, with a ring on the ring finger. The background is a soft, out-of-focus bokeh of light and dark spots. The text is overlaid on the image in a black, italicized font.

“I let others take control of me and I had to fight, this is my time to shine, I’m young and in control of me and I don’t want to be the broken person I was”


- Client

Join us

To become a corporate partner please email:
enquiries@theyoutrust.org.uk

To find out more visit:
theyoutrust.org.uk

Contact head office:
The YOU Trust
Delme 1, Delme Place, Cams Hall Estate,
Fareham, Hampshire, PO16 8UX



YOU: a charity,
creatively empowering
people to thrive in their
communities.

YOU is a registered charity (no. 291489) and company limited by guarantee (no. 01898188) working across Southern and South West England. VAT registration No: 162 5014 41

Registered with



FUNDRAISING
REGULATOR